



[www.knights.uk.com](http://www.knights.uk.com)

CARDIFF

VALE

CAERPHILLY

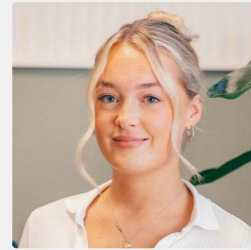
BRISTOL



*Glanfa Dafydd*



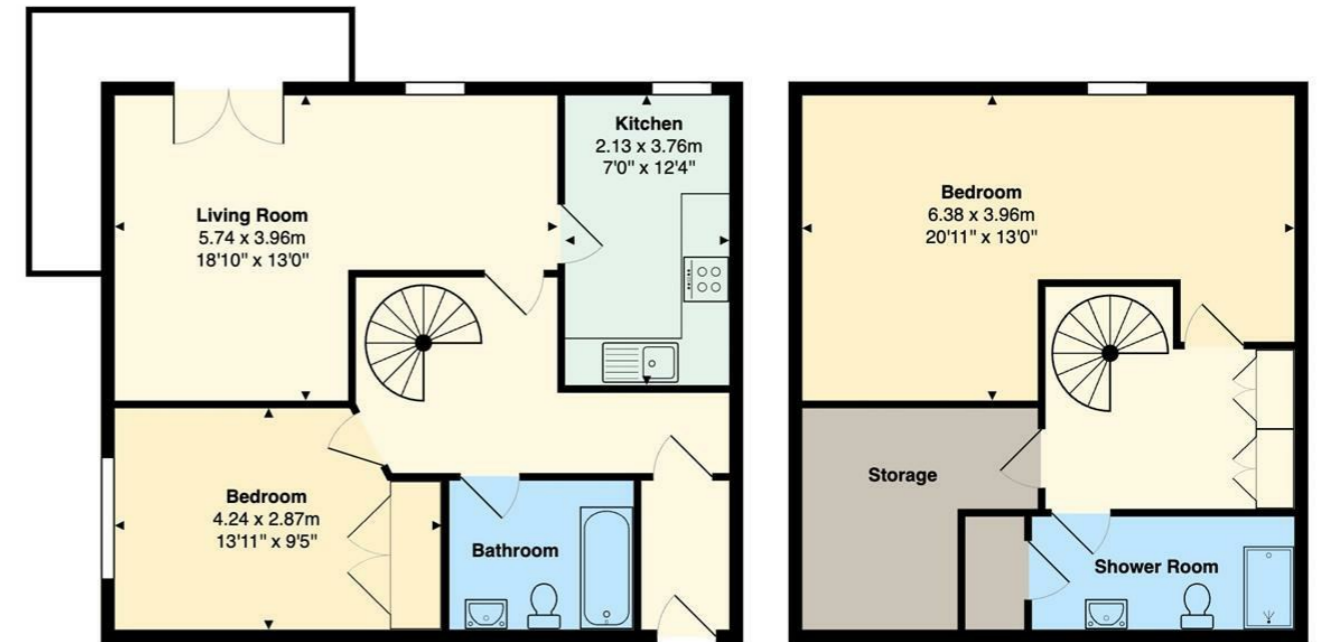
Comments by Miss Georgia Farr



**Property Specialist**  
**Miss Georgia Farr**  
Sales Negotiator

[georgia@jeffreycrossandknights.co.uk](mailto:georgia@jeffreycrossandknights.co.uk)

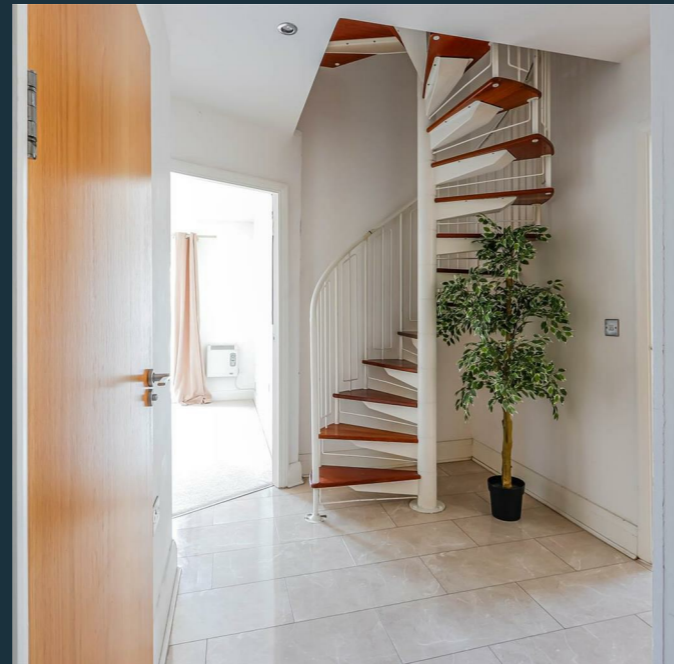
**Amorella, Glanfa Dafydd, Barry, CF63 4BG**



Total Area: 99.4 m<sup>2</sup> ... 1070 ft<sup>2</sup>

All measurements are approximate and for display purposes only

Comments by the Homeowner





# Glanfa Dafydd

, Barry, CF63 4BG

Asking Price

£180,000



2 Bedroom(s)



2 Bathroom(s)



1070.00 sq ft



Contact our  
**Knights Barry Branch**

01446 700222

Situated within the sought after Glanfa Dafydd development in Barry, this beautifully presented two double bedroom penthouse maisonette offers stylish, modern living in an enviable waterside setting. Boasting a spacious reception room ideal for both relaxing and entertaining, the property combines comfort, practicality, and plenty of storage throughout.

The apartment features two generously sized double bedrooms and two well appointed bathrooms, providing excellent accommodation for professionals, couples, small families, or those looking to downsize without compromise.

A standout feature of this impressive home is the private balcony, where you can enjoy stunning water views and peaceful surroundings, the perfect place for morning coffee or evening relaxation.

Ideally positioned within walking distance of local shops, parks, cafés, and everyday amenities, the property offers exceptional convenience alongside its tranquil setting. Further benefits include an allocated parking space and the advantage of being offered to the market with no onward chain.

This superb penthouse maisonette presents a fantastic opportunity to enjoy contemporary coastal living in one of Barry's most desirable locations. Early viewing is highly recommended.



PORCH 3'09" x 6'04" (1.14m x 1.93m )

HALLWAY 8'08" (2.64m )

HALLWAY 3'05" / 7'0" (1.04m / 2.13m )

BEDROOM TWO 8'09" x 11'06" (2.67m x 3.51m )

LIVING ROOM 18'10" / 9'11" x 13'00" / 7'05" (5.74m / 3.02m x 3.96m / 2.26m )

KITCHEN 7'0" x 12'04" (2.13m x 3.76m)

BATHROOM 6'03" x 7'10" (1.91m x 2.39m)

BEDROOM ONE 10'06" / 7'10" / 13'01" x 20'11" / 10'0" (3.20m / 2.39m / 3.99m x 6.38m / 3.05m)

STORAGE 10'0" / 6'08" x 8'06" / 3'05" (3.05m / 2.03m x 2.59m / 1.04m )

SHOWER ROOM 11'02" x 4'10" (3.40m x 1.47m )

STORAGE 4'10" x 2'06" (1.47m x 0.76m )

CARDIFF

VALE

CAERPHILLY

BRISTOL





Energy Efficiency Rating		Current	Potential
Very energy efficient - lower running costs			
(92 plus) A			
(81-91) B			
(69-80) C		73	73
(55-68) D			
(39-54) E			
(21-38) F			
(1-20) G			
Not energy efficient - higher running costs			
<b>England &amp; Wales</b>		EU Directive 2002/91/EC 